

# Adapting to Ambient with Gloo Mesh

Application Networking Day - October 24th 2022



# Speakers



Aaron Birkland

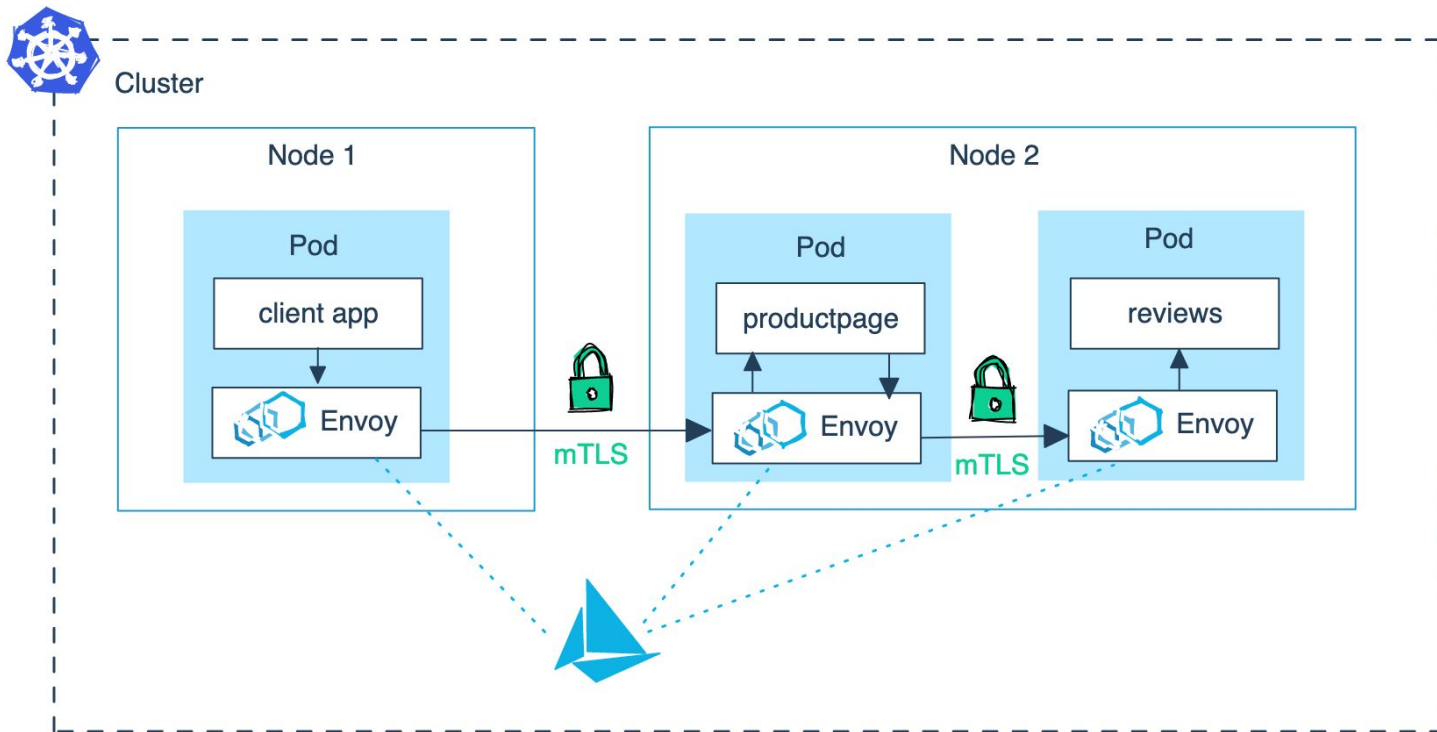
Tech Lead



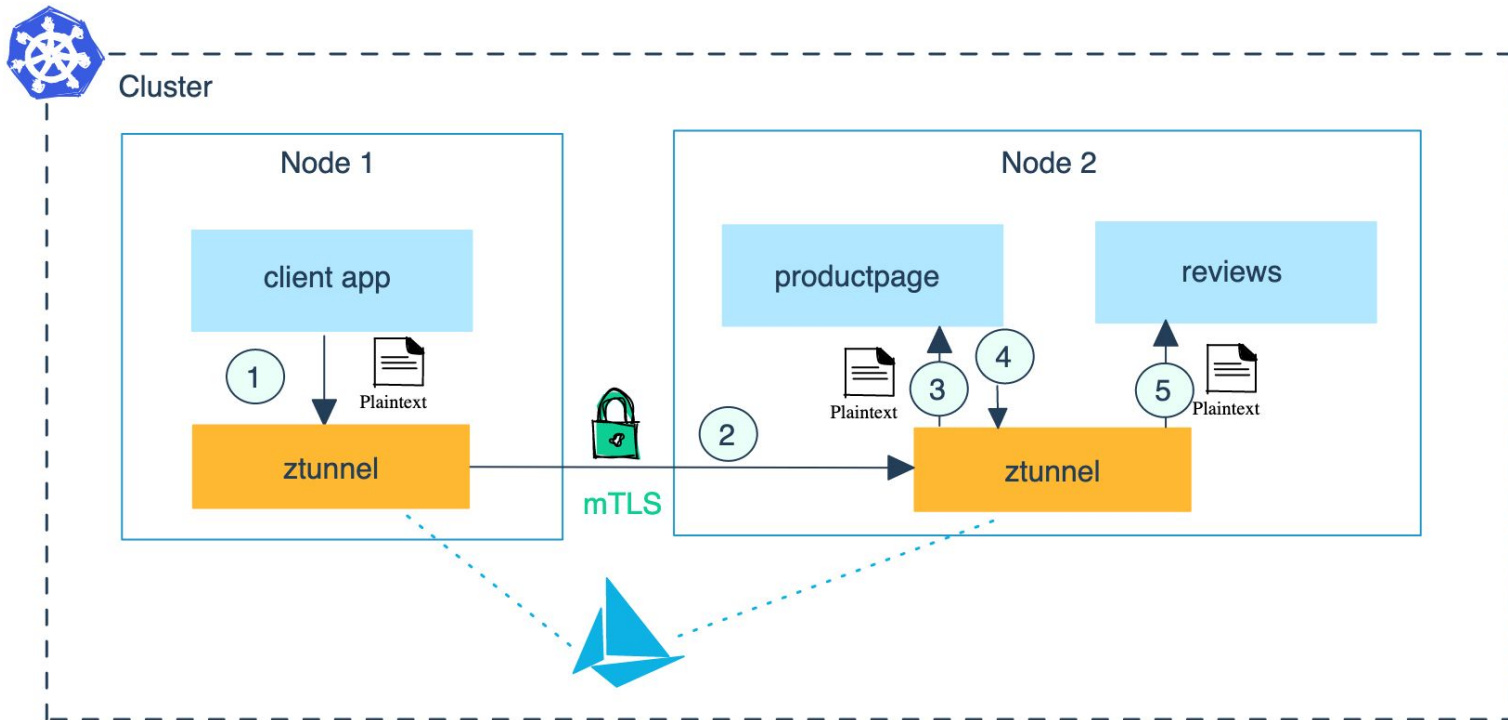
Nina Polshakova

Software Engineer

# Classic Sidecar Architecture



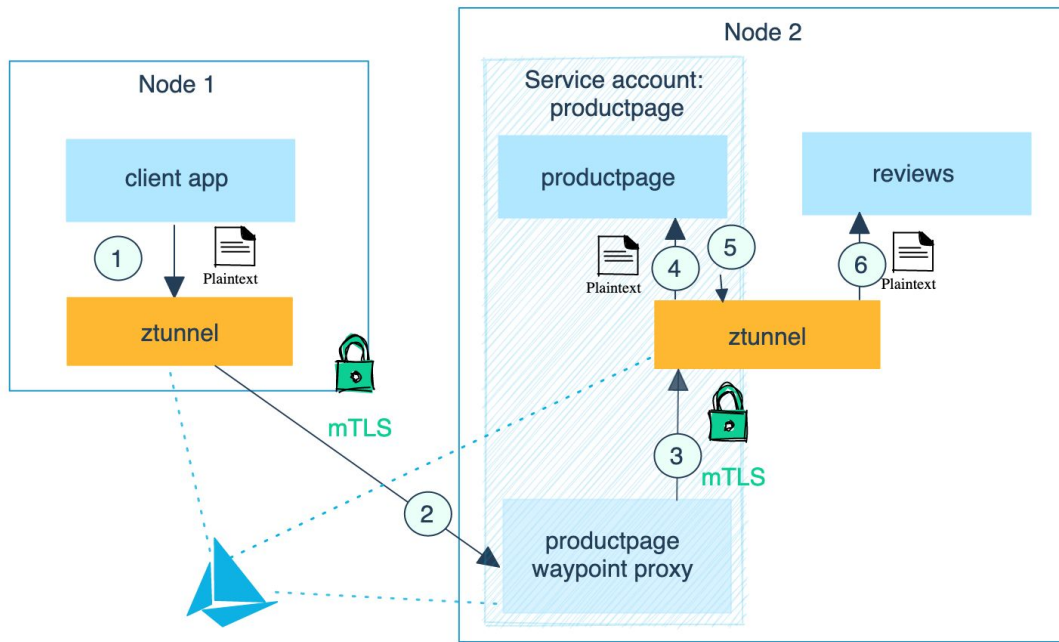
# Ambient Overlay



# Separating out L7



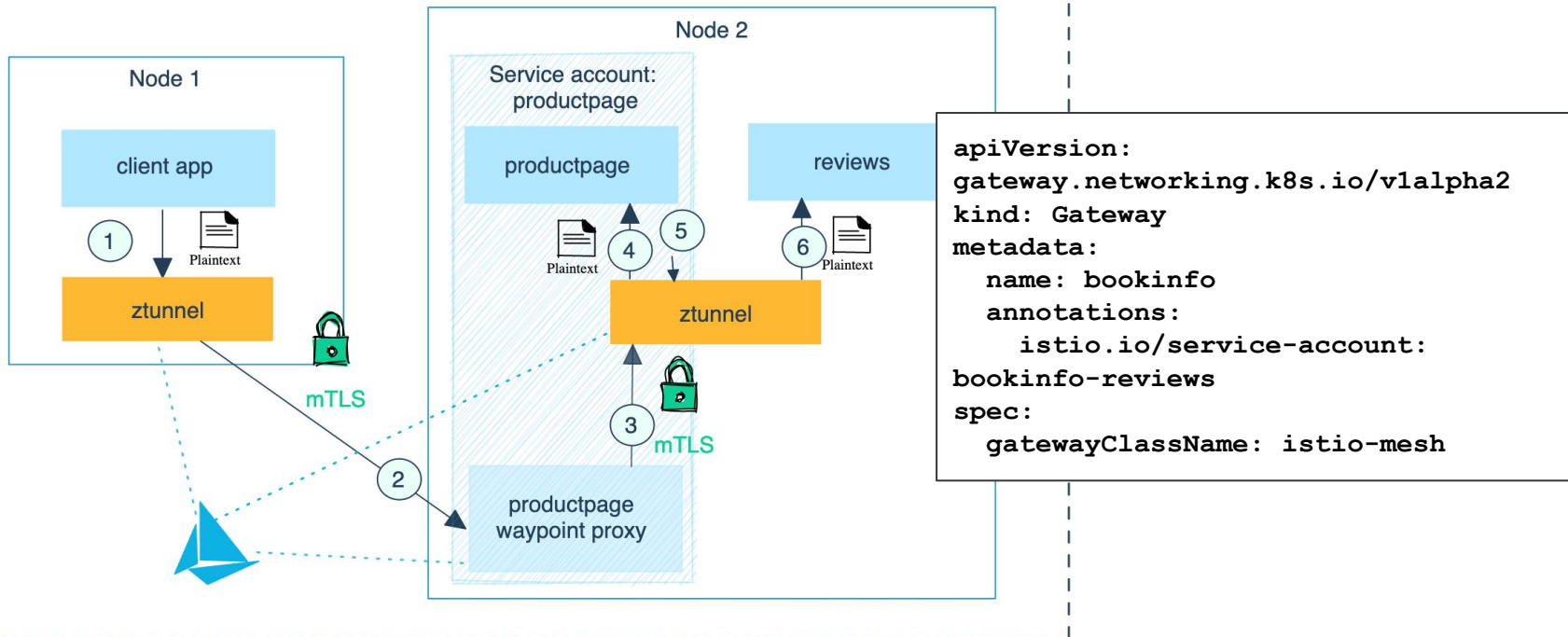
Cluster



# Leveraging the Gateway API



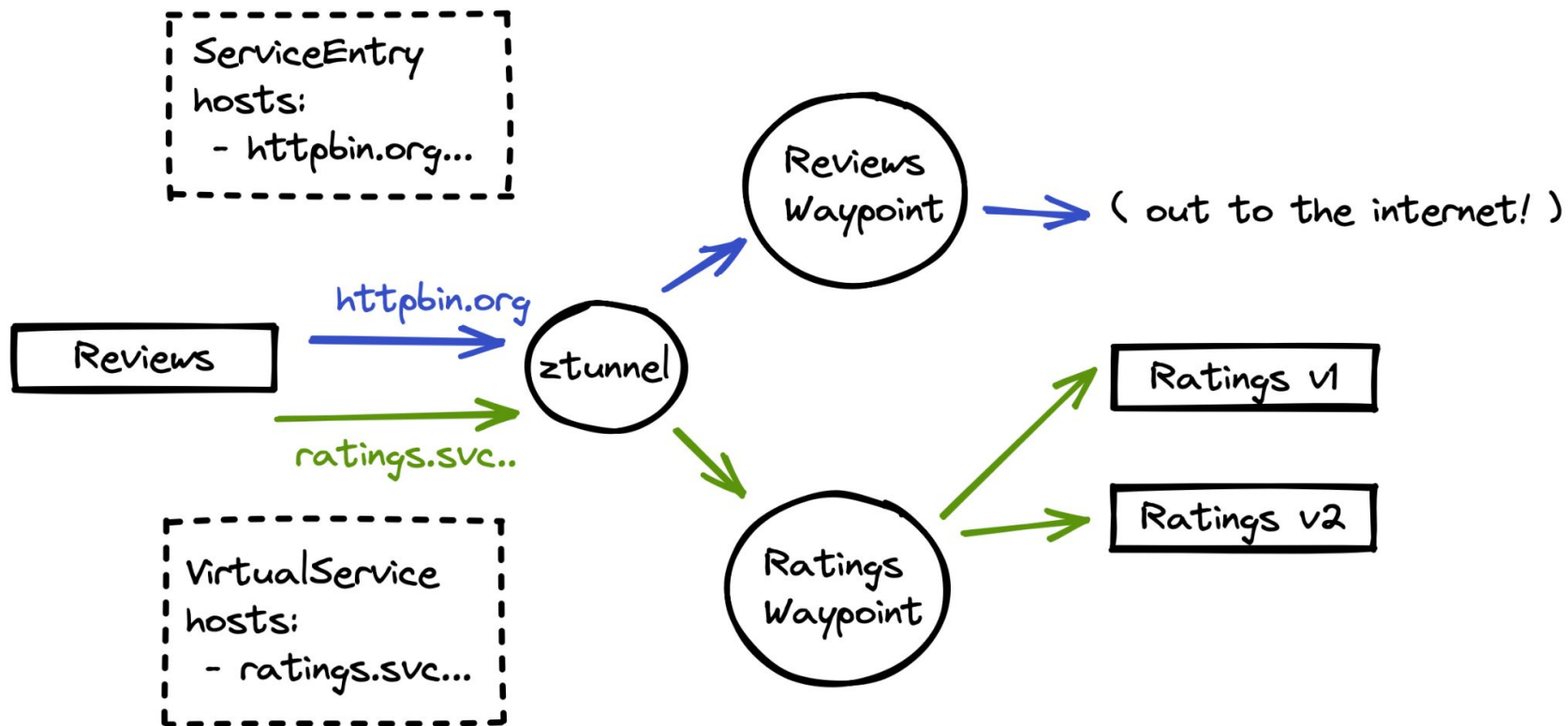
Cluster



# New Questions Abound

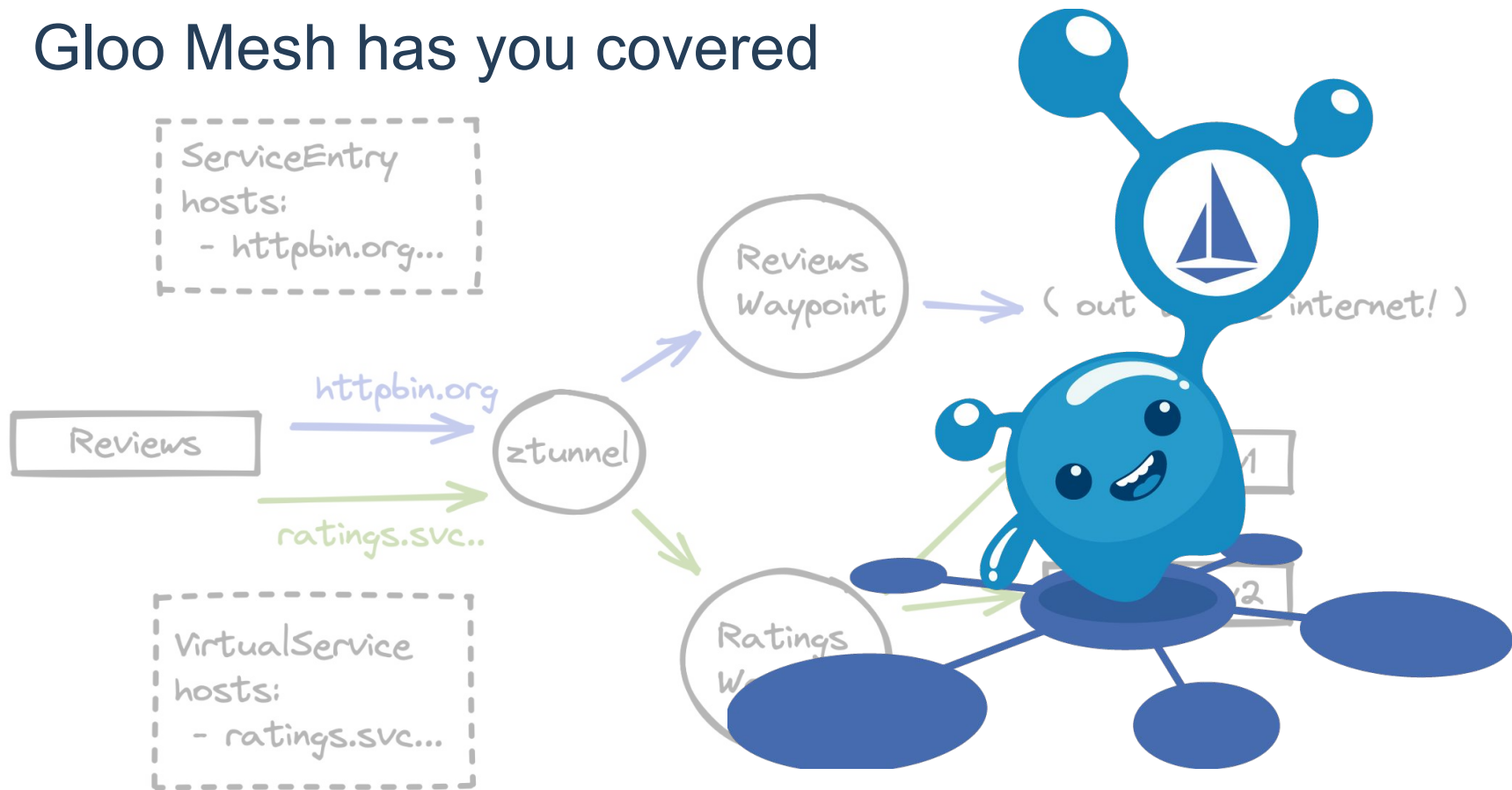
- What does it mean to have a waypoint “for a service account”?
- When is it necessary to create Gateway resources?
- What about affinity, scaling, HA?

# A different mental model



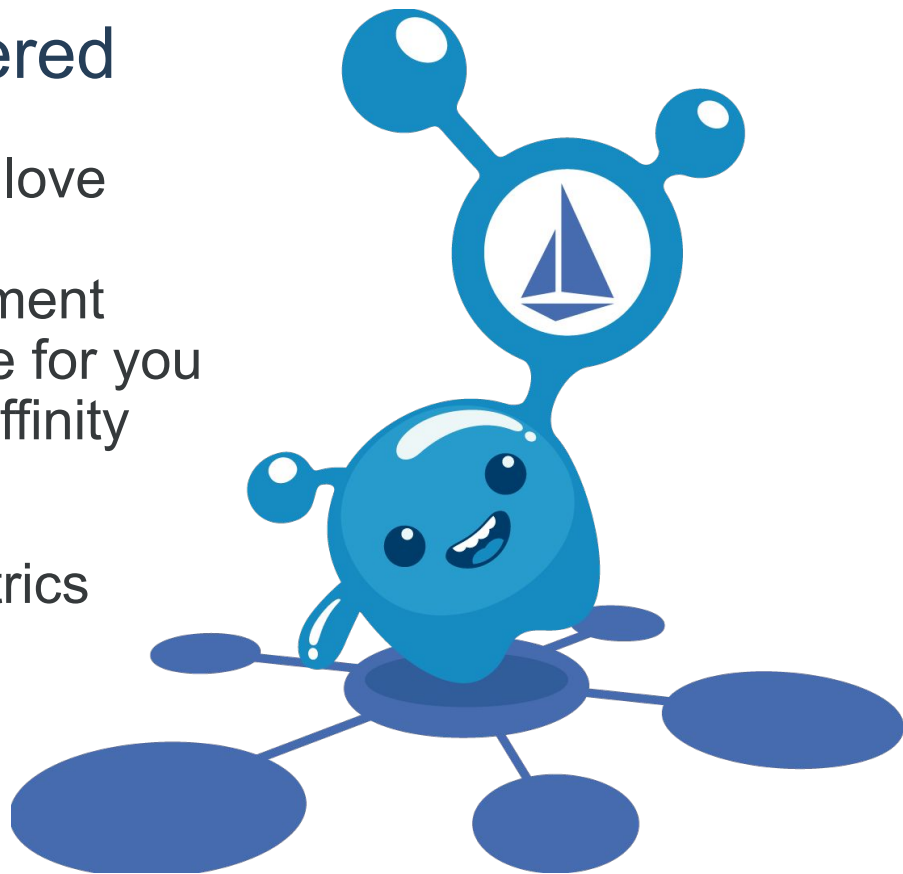


# Gloo Mesh has you covered

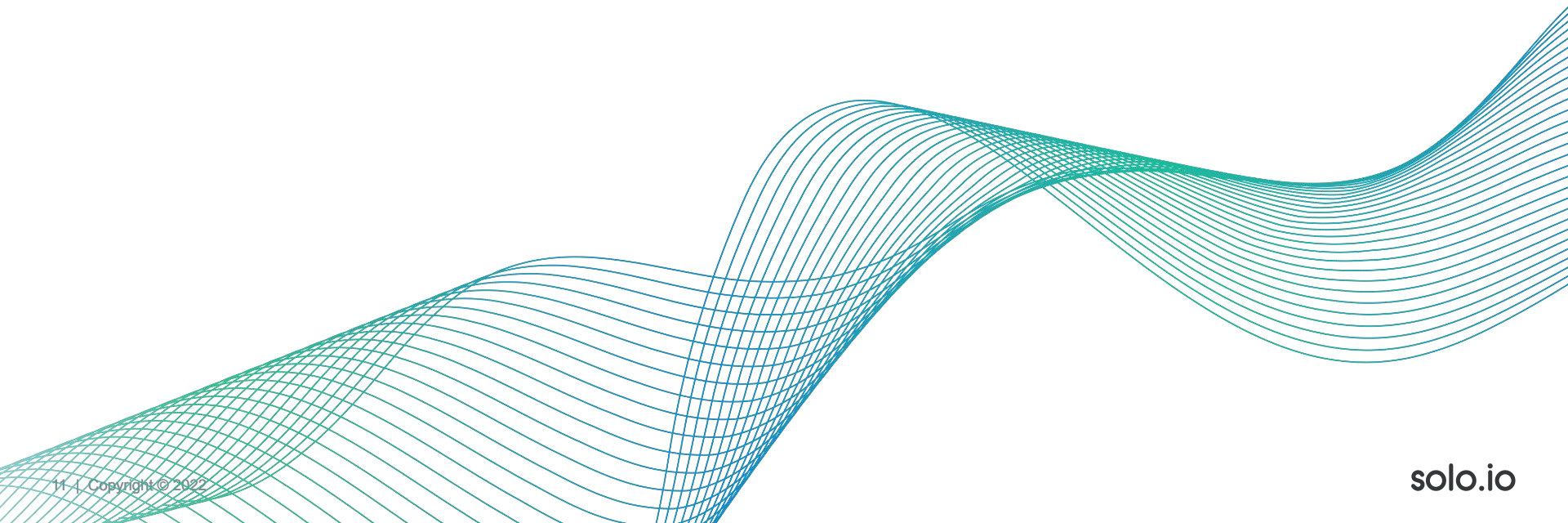


# Gloo Mesh has you covered

- The same abstractions you love
- Waypoint lifecycle management
  - Determines when/where for you
  - Opt-in API for scaling, affinity
- Same UI from different metrics
- Manage risk



# Demo

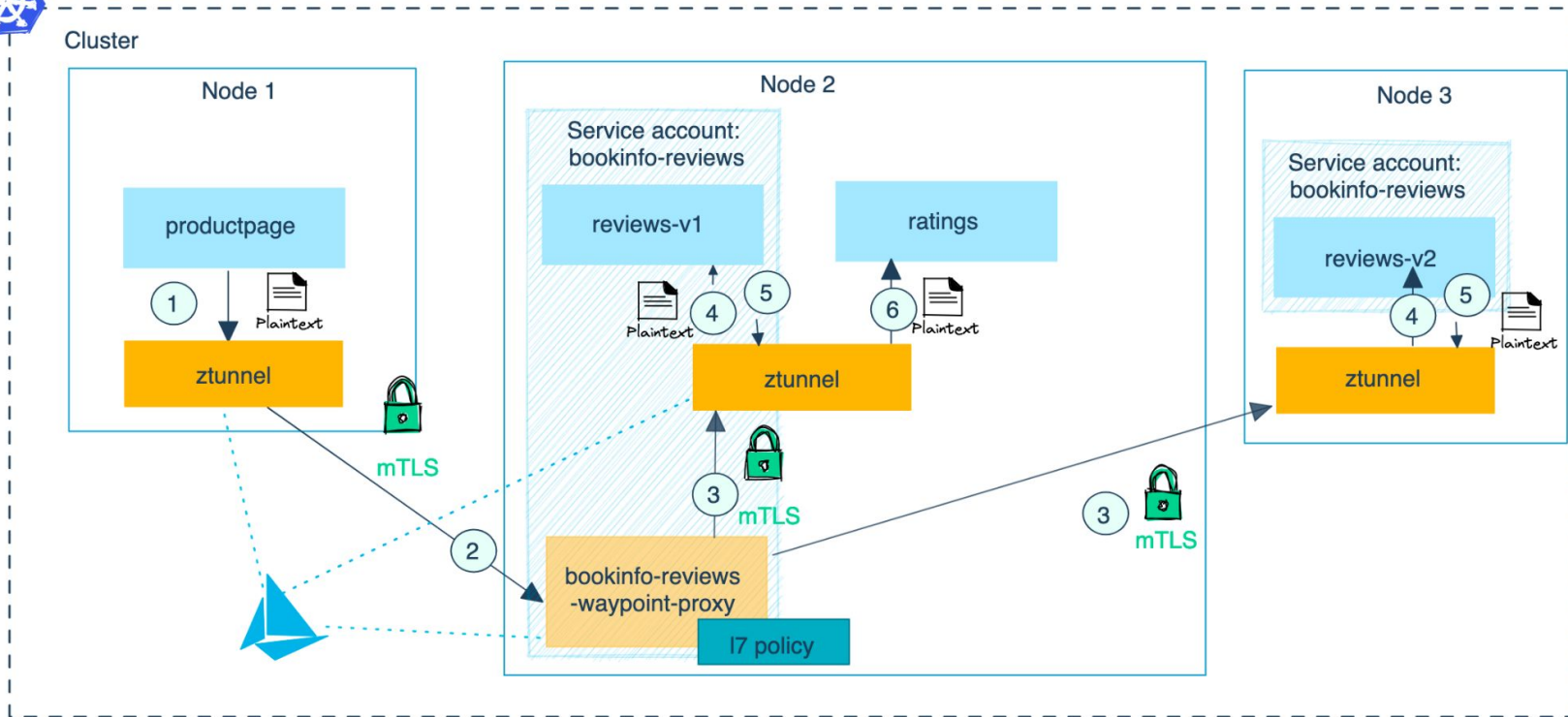


Thank You!



**solo.io**

# Managing Istio Waypoint Proxies



# Client vs Server Waypoint Proxy

- *Server Waypoint* - header routing, fault injection, timeouts, header manipulation
- *Client Waypoint* - client configuration for load balancing, connection pool size, outlier detection

